

# VIEW 3 PRO

**BELIEVE YOUR EYES**

## SMART ACTIVE CLAD ALIGNMENT FUSION SPLICER W/ A CLOUD-BASED OPERATION & MANAGEMENT SYSTEM

- Built-in IoT Module for Mobile Data Communication
- Web-based, Real-time Operation System
- Active V-Groove Clad Alignment Splicing Method
- The Highest Magnification and Resolution
- 5" Color LCD Touch Screen
- Double Tapping ( Zoom in & Out )
- Detachable SOC Holder and Heating Oven
- 3 Bright LEDs for Dark Environment
- Ceramic Clamp for Improved Durability



### CLOUD MANAGEMENT SYSTEM FEATURES



**JOB & WORK  
MANAGEMENT**



**DEVICE  
MANAGEMENT**



**REAL-TIME  
TRACKING**



**REPORT & DATA  
MANAGEMENT**

## DESCRIPTION

VIEW3 PRO is the most precise active cladding fusion splicer in the market with its advanced four motored alignment algorithm to ensure the ultimate work experience. VIEW3 PRO's 5-inch high-resolution color LCD touch screen with user-friendly intuitive GUI (Graphic User Interface) offers large and clear fiber images to users. By double-tapping the screen, users can Zoom In & Out the image to the world's highest magnification of 520x. Moreover, the 3 LED lights provide bright splice condition to the users working in the darkest environments.

The fusion splicer is equipped with built-in IoT module that connects to the INNO's View Pro Cloud Management System for real-time operation and management online. This innovative cloud-based solution is designed to create the most advanced and yet most uncomplicated splicing and work experiences ever.

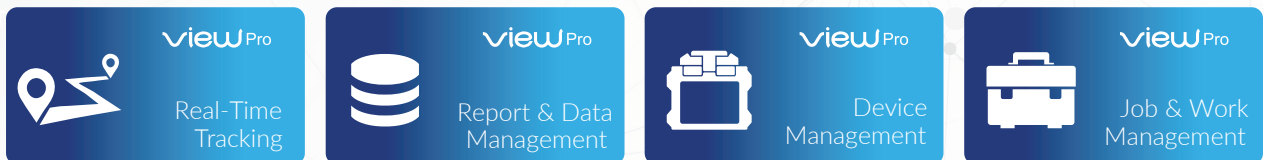
### View Pro Cloud Management System

View Pro Management System is an integrated cloud-based software platform for INNO's splicers. This innovative web-based application allows both technicians and managers of the splicers to maximize the use of its assets and to achieve the highest work efficiency. Real-time communications with tiered access rights and options to manage job orders, manage splicing machines, and send/receive reports are only a small part of the innovative work processes offered by the View Pro.



## FEATURES

FEATURES



## DASHBOARD

### Job/Work Management

Share and manage job/work to maximize efficiency and productivity

### Web/Cloud-Based Service

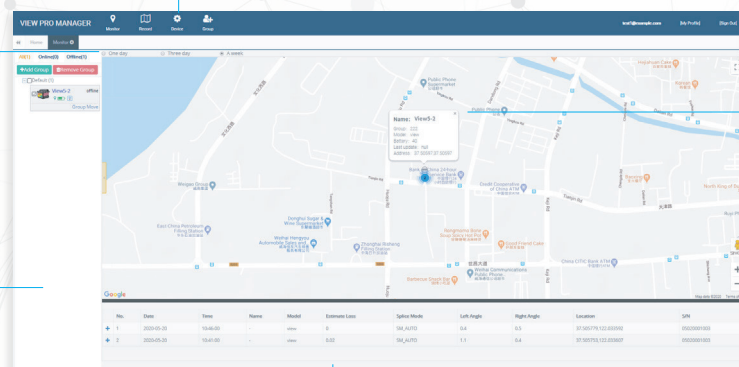
Accessible via PC with tiered access rights and authorities

### Device Management

Manage splicers' maintenance & service needs such as SW update, calibration, spare parts

### Pop-up Alerts/Messages

Automatic alerts and messages to indicate a machine's status



### Real-time, Seamless Reporting

Splice results, locations, reports, and other data can be retrieved instantaneously



# TECHNICAL SPECIFICATIONS

## General Specifications

Items	Specifications
Model	VIEW3 PRO
Alignment Method	Active V-groove Clad Alignment
Number of fiber	Single
Applicable fibers	SM (ITU-T G.652&G.657) / MM (ITU-T G.651) / DS (ITU-T G.653) / NZDS (ITU-T G.655)
Cladding Diameter	80 ~ 150μm
Cleaved Length	5 ~ 16mm
Typical Splice Loss	SM: 0.03dB / MM:0.01dB / DS:0.05dB / NZDS: 0.05dB / G.657: 0.03dB
Return Loss	>> 60dB
Estimated Splice Loss	Available
Splice Time	Quick mode : 7 sec (Avg.) / SM Auto mode : 9 sec (Avg.)
Splice Mode	Max 128 modes
Heating Sleeve	20 ~ 60mm
Heating Time	13 sec
Heating Mode	Max 32 modes
Tension Test	1.96 ~ 2.25N
Dimension	149W x 177D x 151H mm(including rubber bumper) / 130W x 166D x 140H mm(excluding rubber bumper)
Weight	2.21kg (with battery) / 1.85kg (without battery)
White LED	3 White LEDs
Monitor	5.0" Color LCD display, Full touch screen
Fiber View	X, Y, XY, X/Y
Magnification	320 ~ 520x
Results Storage	10,000 Splice data / 10,000 Splice image
Power Supply	AC Input 100 ~ 240V, DC Input 9 ~ 14V
Terminal	USB Type C / Nano SIM
Battery Capacity	5200mAh Battery Capacity, Typical 200 Cycles (Splice+Heat)
Electrode Life	5500 arcs discharges

## Environmental Condition

Items	Specifications
Operating Condition	Altitude: 0 ~ 5000m Humidity: 0 ~ 95%, non-dew Temperature: -10 ~ 50 °C Wind: up to 15m/sec
Storage Condition	Humidity: 0 ~ 95%, non-dew Temperature: -40 ~ 80 °C

## Environmental Test

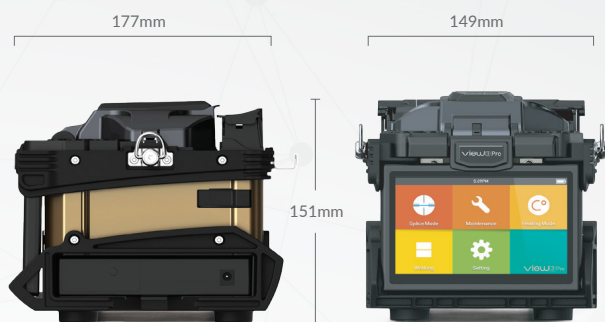
Items	Specifications
Water Resistance	IPx2
Shock Resistance	Drop from 76cm
Dust Resistance	IP5X



## Notes

- \* 1: Measured by cut-back method relevant to ITU-T and IEC standards.
- \* 2: Measured at room temperature. Splice time may vary depending on the environmental conditions, fiber type, and fiber characteristics.
- \* 3: Measured at room temperature. Heating time changes depending on the environmental conditions, sleeve type and battery pack condition.
- \* 4: Test condition  
(1) Splice and heat time : 2 minutes cycle ; (2) Using full charged battery ; (3) At room temperature ; (4) Typical monitor brightness setting 70%
- \* 5: The electrode life changes depending on the environmental conditions, fiber type and splice modes.

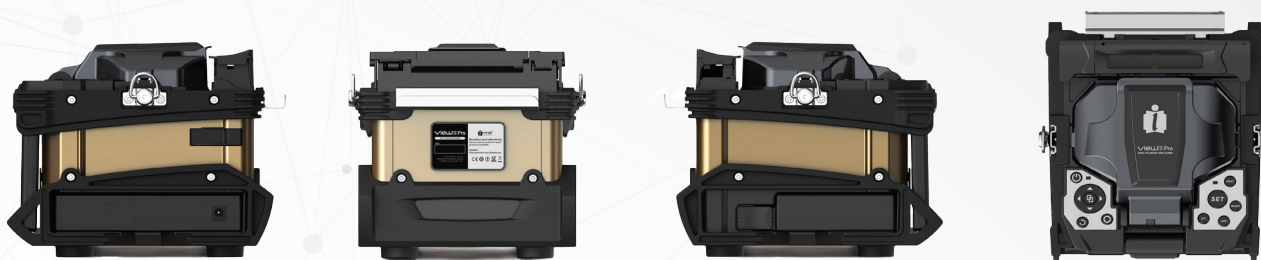
## WEIGHT AND DIMENSIONS



Height: 5.95 inches (151 mm)  
Width: 5.87 inches (149 mm)  
Depth: 6.97 inches (177 mm)  
Weight: 4.08 pounds (1.85 kg without battery)



### Detailed View



## PACKAGE

### Standard Package

Model / Part No.	Description	
	Main Unit	
VIEW3 PRO	Fusion Splicer	
	Standard Accessories	
V11	Cleaver	1ea
FH-45	Fiber Holder	1set
FH-SOC-R	SOC Holder	1ea
HTS-SOC-02	SOC Heater Cover	1ea
JS-180300	AC Adapter	1ea
CG-22	Cooling Tray	1ea
E-50	Electrode	1set
LBT-52	Battery Pack	1ea
ACC-25	Power Cable	1ea
USB-7P	USB Type C - Type A Cable	1ea
ICC-51	Carrying Case	1ea
ST-01	Shoulder Strap(Carrying case)	1ea
Quick Reference		1ea

### Optional Accessories

Model / Part No.	Description	
TK02-AP01	Alcohol pump	1ea
TK02-MP01	Stripper	1ea
CJ-11	Cigarette Lighter Cable	1ea
EG-18	Electrode Grinder	1ea
PS-60S	Heating sleeve(60mm)	1pack(100ea)

### VIEW PRO MANAGEMENT SYSTEM

Items	Specifications
Web Site	<a href="http://www.innoinstrument.com">www.innoinstrument.com</a>
QR Code	

 The Information on this catalog is subject to change without prior notice.